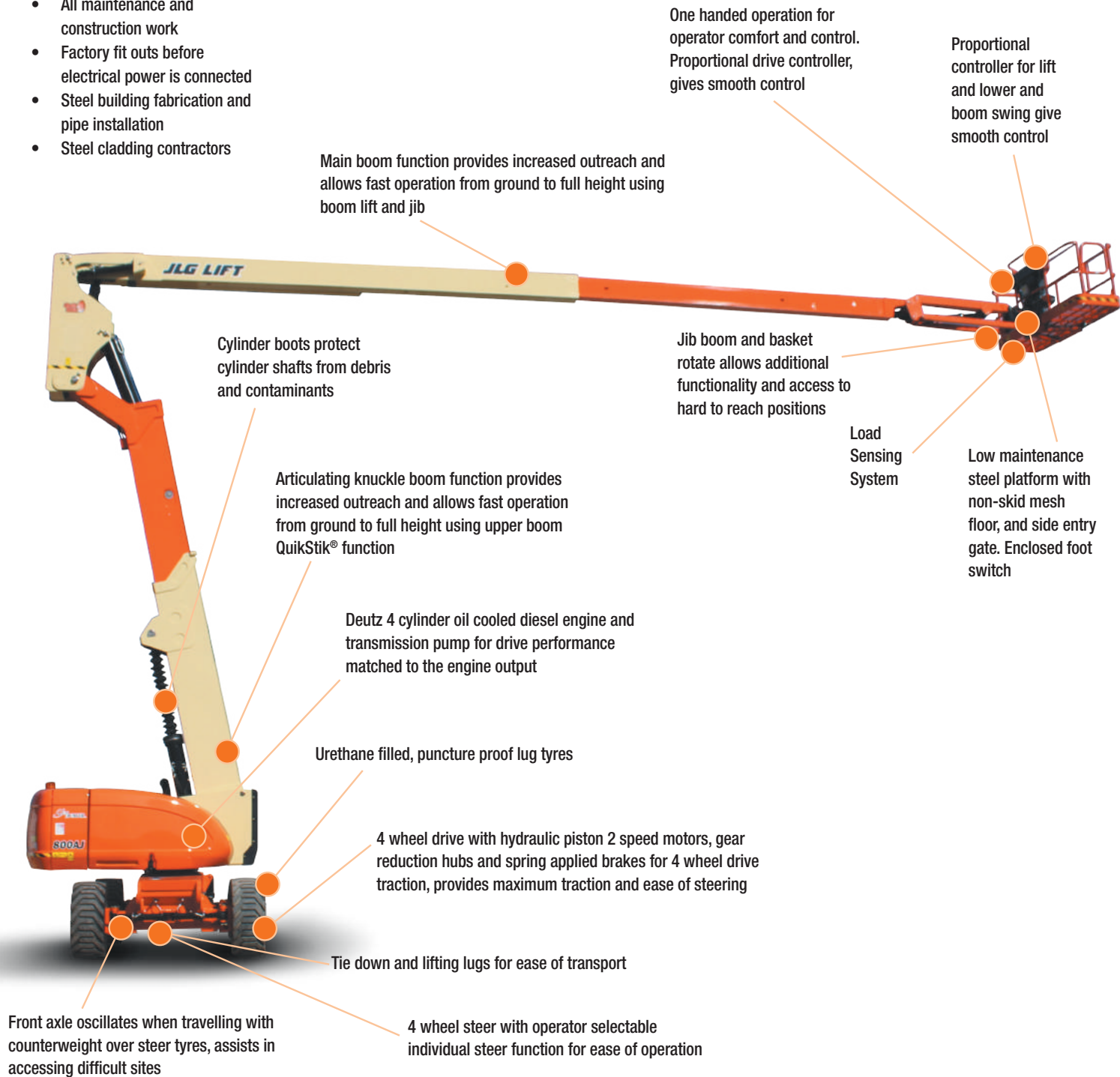


800AJ Articulating Boom Lift



APPLICATIONS

- Facilities maintenance
- Electricians
- Plumbers
- All maintenance and construction work
- Factory fit outs before electrical power is connected
- Steel building fabrication and pipe installation
- Steel cladding contractors

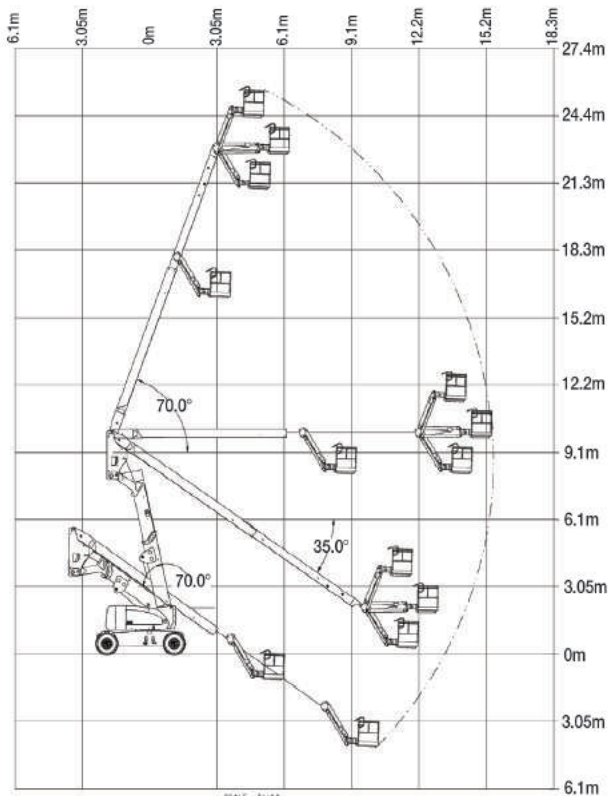


QUESTIONS TO ASK

- What are the ground conditions in the work area?
- What are the site conditions travelling around the site?
- What is the working height needed for the job?
- What is the outreach required for the job?
- What is the up and over height needed to reach when working in congested sites?
- Do you need an extension lead outlet in the platform?
- Will an inbuilt Miller 5.5kVA generator make the job easier?

KEY SELLING POINTS

- Smooth control, proportional hydraulic 4 wheel drive, with two speed ranges
- Proportional lift and swing controls at the platform for fast functionality
- Oscillating front steer axle with the boom within 10 degrees of centre, assists 4 wheel drive traction
- Jib boom and basket rotate
- Knuckle boom arrangement allows fast operating speeds, QuikStik® function allows ground to full height operation with one controller
- Cylinder boots protect cylinder rods from overspray and contaminants
- Large lug pattern urethane filled tyres
- Multi axis 4 degree level sensor
- Plug in JLG analyser at platform and base to indicate system functions for servicing and adjustment
- Deutz Engine D2011 L04. High speed, 4 cylinder, liquid (oil cooled), 48.5kW engine pre-glow and post-glow feature reduces emissions



SPECIFICATIONS

Performance:

Platform Height (max.)	24.38m
Working Height	26.38m
Platform Rotation Angle	180°
Jib Raise Angle	70°
Jib Lower Angle	60°
Jib Articulation Range	130°
Maximum Horizontal Outreach	15.80m
Platform Capacity	230kg
Slewing Angle	360°
Continuous Slew	Yes

Dimensions:

Stowed Length	11.13m
Stowed Height	3.00m
Overall Width	2.44m
Wheelbase	3.05m
Ground Clearance	0.30m
Platform Width	2.44m
Platform Length	0.91m
Overall Jib Length	1.83m
Tailswing	0.76m
Axle Oscillation	Std

Power:

Power Source	Diesel
Engine Make	Deutz
Engine Model	D2011 L04
Engine Power	48kW
Genset	5.5kVA Miller
Auxiliary Power	12V Pump

Travel:

Tyre Size	445/55 x 19.5
Tyre Type	Urethane Filled
Inside Turn Radius	2.13m
Outside Turn Radius	4.42m
Gradeability with 4WD	45%
Drive Speed - 4WD	4.8km/h
Maximum Ground Bearing Pressure	5.3kg/cm ²

Weights and Capabilities:

Fuel Tank Capacity	147.63 Ltr
Hydraulic Tank Capacity	151.42 Ltr
Operating Weight	15,558kg